

HINGE  
SERIES 900

**BISARAN** 

## Hinge Series 900 / 904 - 906 - 905 - 907



904 SF MATT CHROME and 905 LF STAINLESS COATED

### Types of Finish



LF - Long Finish



SF - Short Finish

### Finishes: 904 (Square Edge) - 906 (Round Edge)

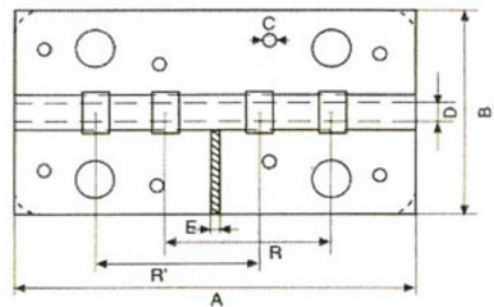
LO	GOLD COATED
LD	GOLD LACQUERED
LC	CHROME LACQUERED
CM	MATT CHROME
NM	MATT NICKEL
LI	STAINLESS COATED
BVC	POLISHED BRONZE
BV2	BRONZE
BL/NG	WHITE/BLACK
INOX	STAINLESS

### Finishes: 905 (Square Edge) - 907 (Round Edge) with bearings

LO	GOLD COATED
LD	GOLD LACQUERED
LC	CHROME LACQUERED
CM	MATT CHROME
NM	MATT NICKEL
LI	STAINLESS COATED
BVC	POLISHED BRONZE
BL/NG	WHITE/BLACK

### DIMENSION TABLES AND DRAWINGS

MOD.	A	B	C	D	E	BEARING
904-906	150	82	6	8	3	-
905-907	150	82	6	8	3	r-right
905-907	150	82	6	8	3	r-left



## Hinge Series 900 / 9041



9041 MATT NICKEL

### Finishes: 9041

	LD	GOLD LACQUERED
	LC	CHROME LACQUERED
	CM	MATT CHROME
	NM	MATT NICKEL
	LI	STAINLESS COATED
	BL/NG	WHITE/BLACK

### Types of Finish



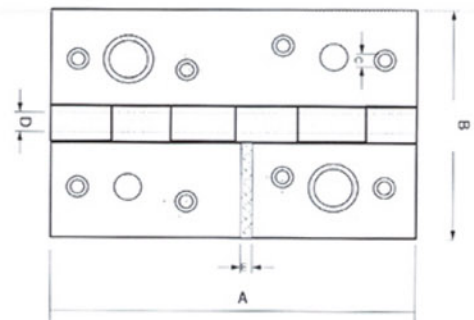
LF - Long Finish



SF - Short Finish

### DIMENSION TABLES AND DRAWINGS

MOD.	A	B	C	D	E
9041	150	100	6	8	3





Polígono Industrial Pagatza  
Pabellón 3 Fase 2, nº 20  
20690 ELGETA (Gipuzkoa)

T: +34 943 78 82 32. +34 943 76 80 50  
F: +34 943 78 91 29

e-mail: [bisaran@bisaran.es](mailto:bisaran@bisaran.es)  
[www.bisaran.es](http://www.bisaran.es)